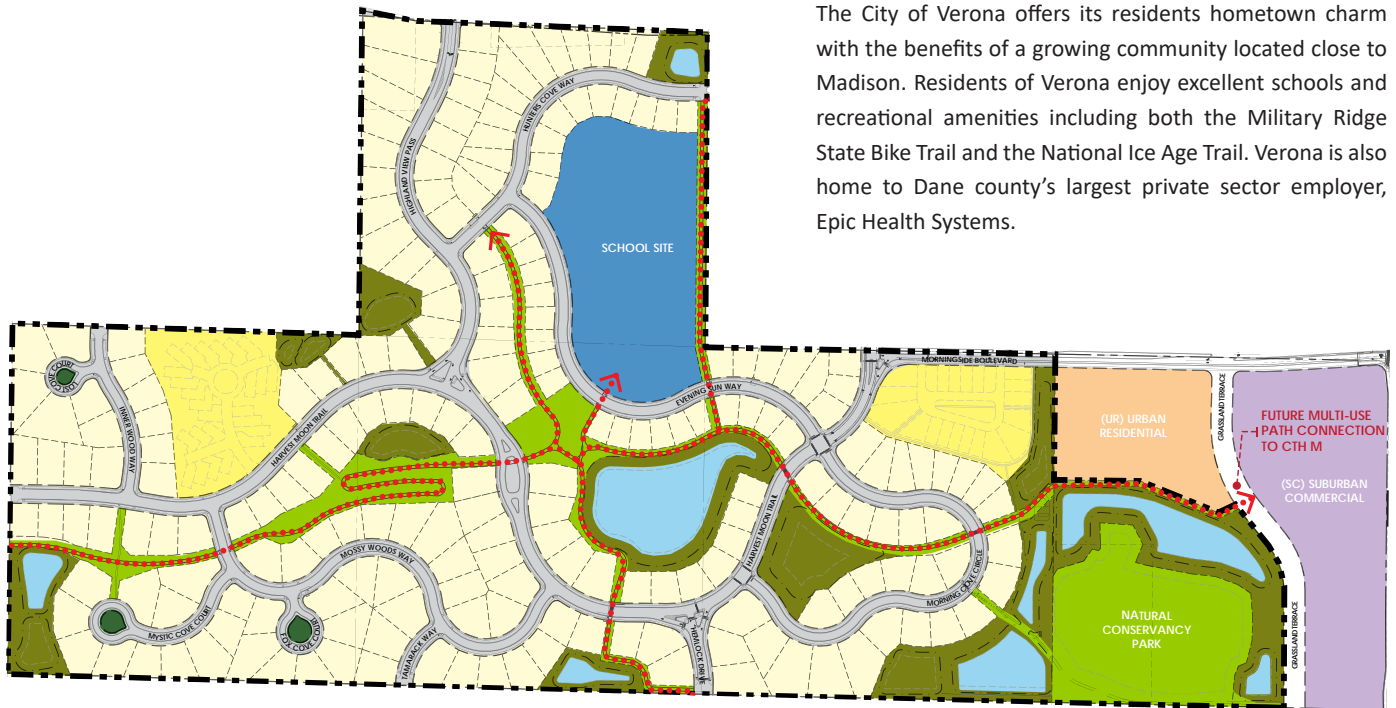


<b>Lot Number:</b>	Block 3, Lot 19
<b>Lot Price:</b>	\$254,900
<b>Lot Size:</b>	19,832 square feet
<b>Exposure:</b>	Standard
<b>Address:</b>	TBD
<b>Municipality:</b>	City of Verona
<b>School District:</b>	Verona Area School District

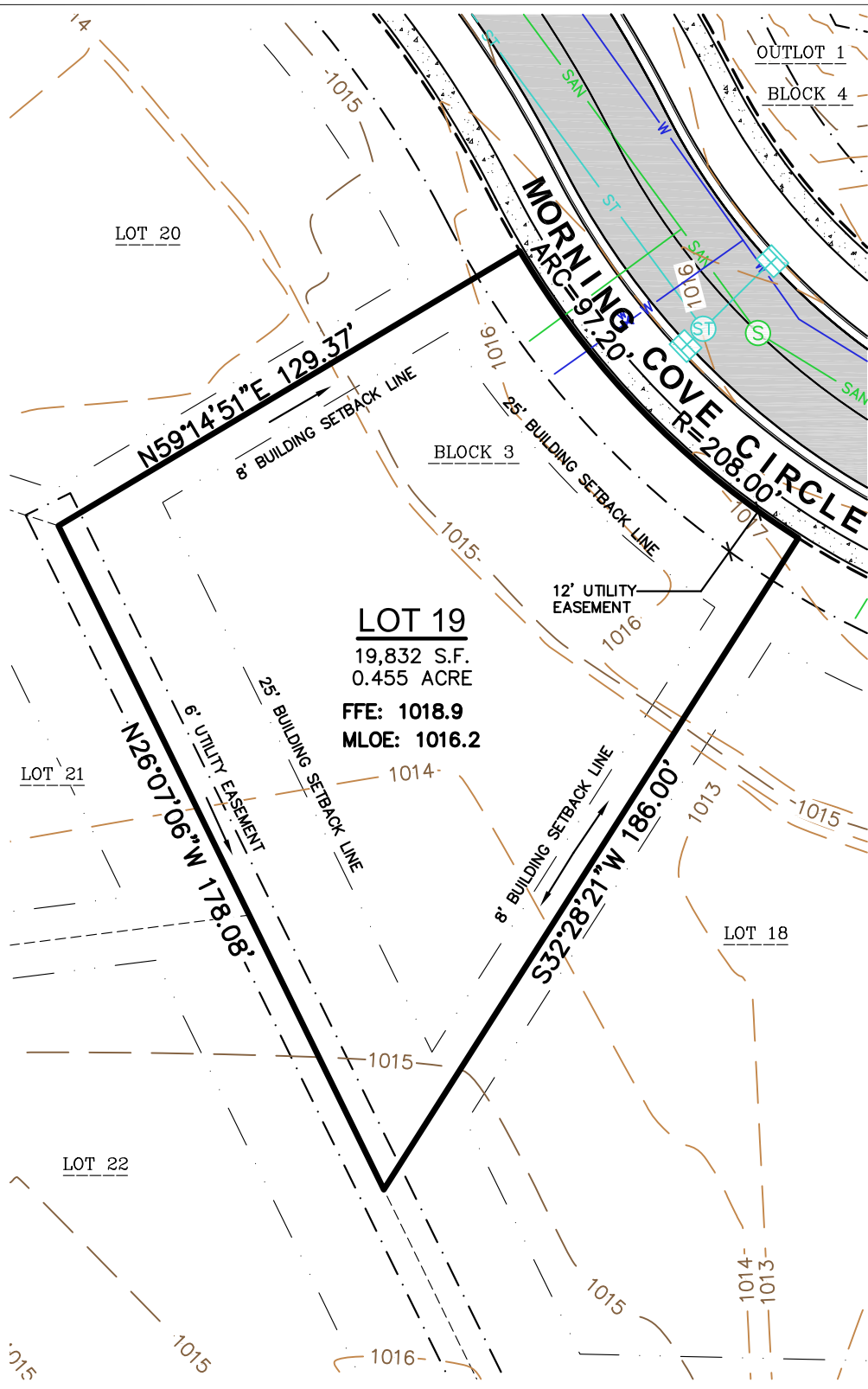


## Verona, Wisconsin

The City of Verona offers its residents hometown charm with the benefits of a growing community located close to Madison. Residents of Verona enjoy excellent schools and recreational amenities including both the Military Ridge State Bike Trail and the National Ice Age Trail. Verona is also home to Dane county's largest private sector employer, Epic Health Systems.



File: I:\2017\177777\DWG\177777 Lot Maps(Blocks 3 & 4).dwg Layout: B3 L19 User: JK Plotted: Aug 10, 2023 - 4:14pm

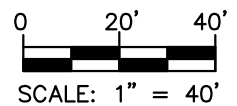


**LEGEND**

- SANITARY MANHOLE
- HYDRANT
- WATER VALVE
- STORM MANHOLE
- CURB INLET
- LOT BOUNDARY
- CENTERLINE
- RIGHT-OF-WAY LINE
- PLATTED LOT LINE
- SETBACK LINE
- EASEMENT LINE
- CONCRETE CURB & GUTTER
- SANITARY SEWER
- DRAINAGE ARROW PER PLAT
- STORM SEWER
- WATER LINE
- 1010 INDEX CONTOUR
- 1011 INTERMEDIATE CONTOUR
- BITUMINOUS PAVEMENT
- CONCRETE PAVEMENT
- FFE** FINISHED FLOOR ELEVATION
- MLOE** MINIMUM LOWEST OPENING ELEVATION

**NOTES**

1. IMPROVEMENTS SHOWN ARE PROPOSED.
2. BEARINGS FOR THIS SURVEY AND MAP ARE REFERENCED TO THE WISCONSIN COUNTY COORDINATE SYSTEM, DANE COUNTY. THE EAST LINE OF THE NORTHWEST QUARTER OF SECTION 10, TOWNSHIP 06 NORTH, RANGE 08 EAST, RECORDED AS N00°36'54"E.
3. ELEVATIONS ARE BASED ON THE NORTH AMERICAN VERTICAL DATUM OF 1988 (NAVD88).
4. CONTOURS SHOWN AS PROPOSED AT ONE FOOT INTERVALS.
5. MAILBOX FOR THIS LOT IS LOCATED ON OUTLOT 3, BLOCK 3.



<p><b>JSD</b> MADISON REGIONAL OFFICE 161 HORIZON DRIVE, SUITE 101 VERONA, WISCONSIN 53593 P. 608-848-5060</p>	PROJECT: <b>WHISPERING COVES</b>	SHEET TITLE: <b>LOT 19, BLOCK 3</b>	PROJECT NUMBER: 17-7777	SHEET NUMBER:  1
	VERONA, WI		DRAWN BY: JK	
			DATE: JULY 27, 2023	