

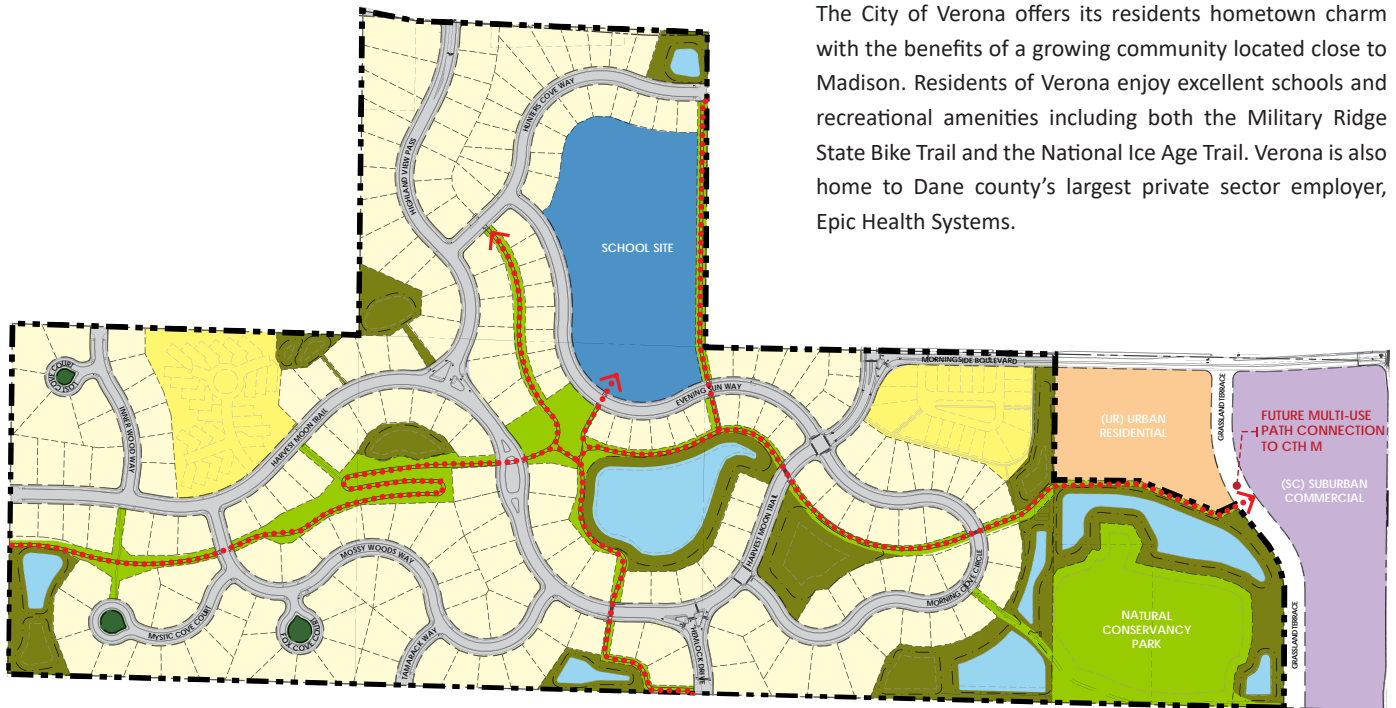
| | |
|-------------------------|-----------------------------|
| Lot Number: | Block 5, Lot 4 |
| Lot Price: | \$226,435 |
| Lot Size: | 13,875 square feet |
| Exposure: | Lookout |
| Address: | TBD |
| Municipality: | City of Verona |
| School District: | Verona Area School District |



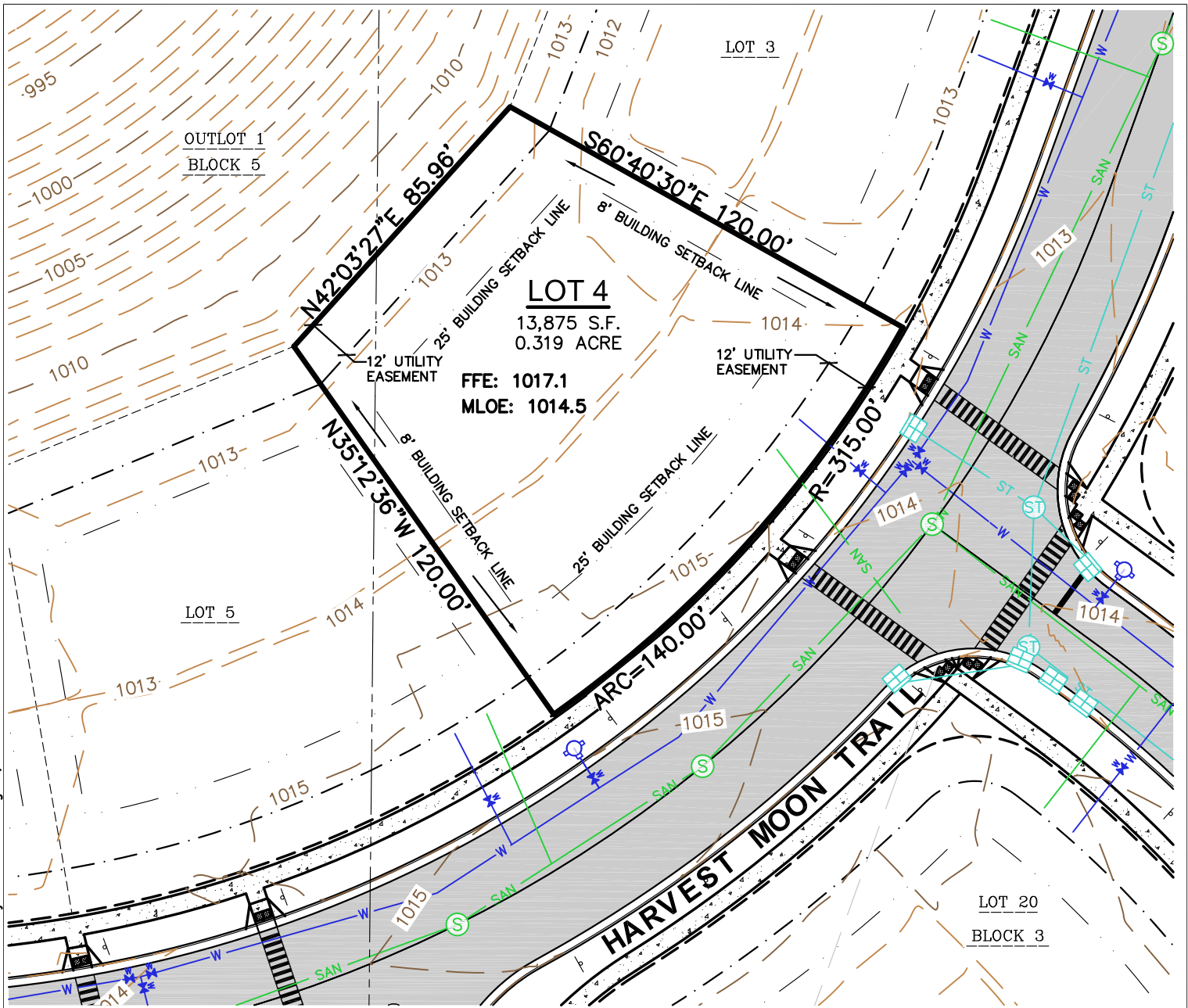
Phase 1 Lots

Verona, Wisconsin

The City of Verona offers its residents hometown charm with the benefits of a growing community located close to Madison. Residents of Verona enjoy excellent schools and recreational amenities including both the Military Ridge State Bike Trail and the National Ice Age Trail. Verona is also home to Dane county's largest private sector employer, Epic Health Systems.



File: I:\2017\177777\DWG\177777 Lot Maps(Blocks 5, 6 & 15).dwg Layout: B5 L4 User: jk Plotted: Aug 11, 2023 - 8:14am

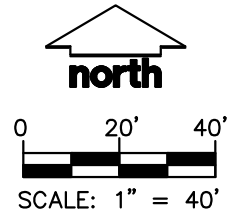


LEGEND

| | | | | | |
|--|------------------|--|-------------------------|-------------|----------------------------------|
| | SANITARY MANHOLE | | RIGHT-OF-WAY LINE | | ST STORM SEWER |
| | HYDRANT | | PLATTED LOT LINE | | W WATER LINE |
| | WATER VALVE | | SETBACK LINE | | 1010 INDEX CONTOUR |
| | STORM MANHOLE | | EASEMENT LINE | | 1011 INTERMEDIATE CONTOUR |
| | CURB INLET | | CONCRETE CURB & GUTTER | | BITUMINOUS PAVEMENT |
| | LOT BOUNDARY | | SANITARY SEWER | | CONCRETE PAVEMENT |
| | CENTERLINE | | DRAINAGE ARROW PER PLAT | FFE | FINISHED FLOOR ELEVATION |
| | | | | MLOE | MINIMUM LOWEST OPENING ELEVATION |

NOTES

1. IMPROVEMENTS SHOWN ARE PROPOSED.
2. BEARINGS FOR THIS SURVEY AND MAP ARE REFERENCED TO THE WISCONSIN COUNTY COORDINATE SYSTEM, DANE COUNTY. THE EAST LINE OF THE NORTHWEST QUARTER OF SECTION 10, TOWNSHIP 06 NORTH, RANGE 08 EAST, RECORDED AS N00°36'54"E.
3. ELEVATIONS ARE BASED ON THE NORTH AMERICAN VERTICAL DATUM OF 1988 (NAVD88).
4. CONTOURS SHOWN AS PROPOSED AT ONE FOOT INTERVALS.
5. MAILBOX FOR THIS LOT IS LOCATED ON OUTLOT 3, BLOCK 6.



| | | | | |
|---|-------------------------|-----------------------|-----------------|---------------|
| JSD MADISON REGIONAL OFFICE 161 HORIZON DRIVE, SUITE 101 VERONA, WISCONSIN 53593 P. 608-848-5060 | PROJECT: | SHEET TITLE: | PROJECT NUMBER: | SHEET NUMBER: |
| | WHISPERING COVES | LOT 4, BLOCK 5 | 17-7777 | 1 |
| | VERONA, WI | | DRAWN BY: | |
| | | | JK | |
| | | | DATE: | |
| | | | JULY 27, 2023 | |