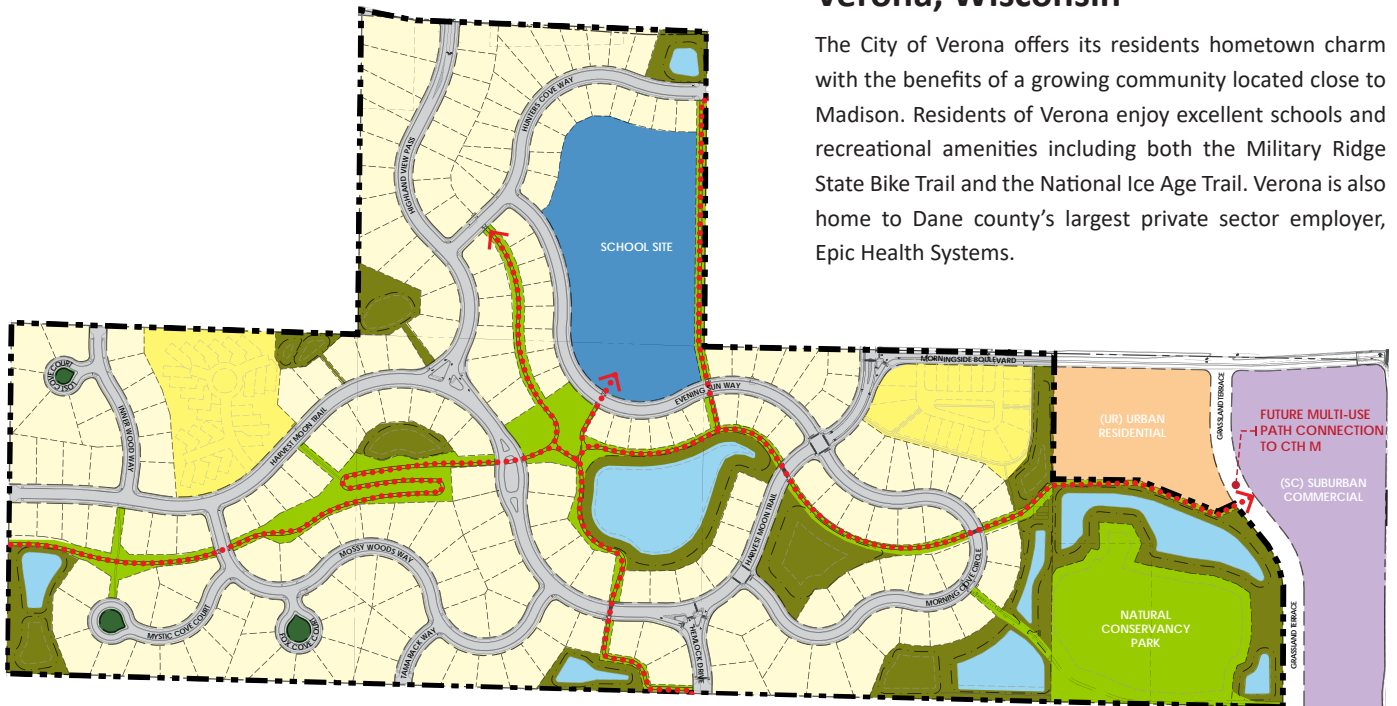


<b>Lot Number:</b>	Block 3, Lot 5
<b>Lot Price:</b>	\$198,900
<b>Lot Size:</b>	13,270 Square Feet
<b>Exposure:</b>	Lookout
<b>Address:</b>	TBD
<b>Municipality:</b>	City of Verona
<b>School District:</b>	Verona Area School District



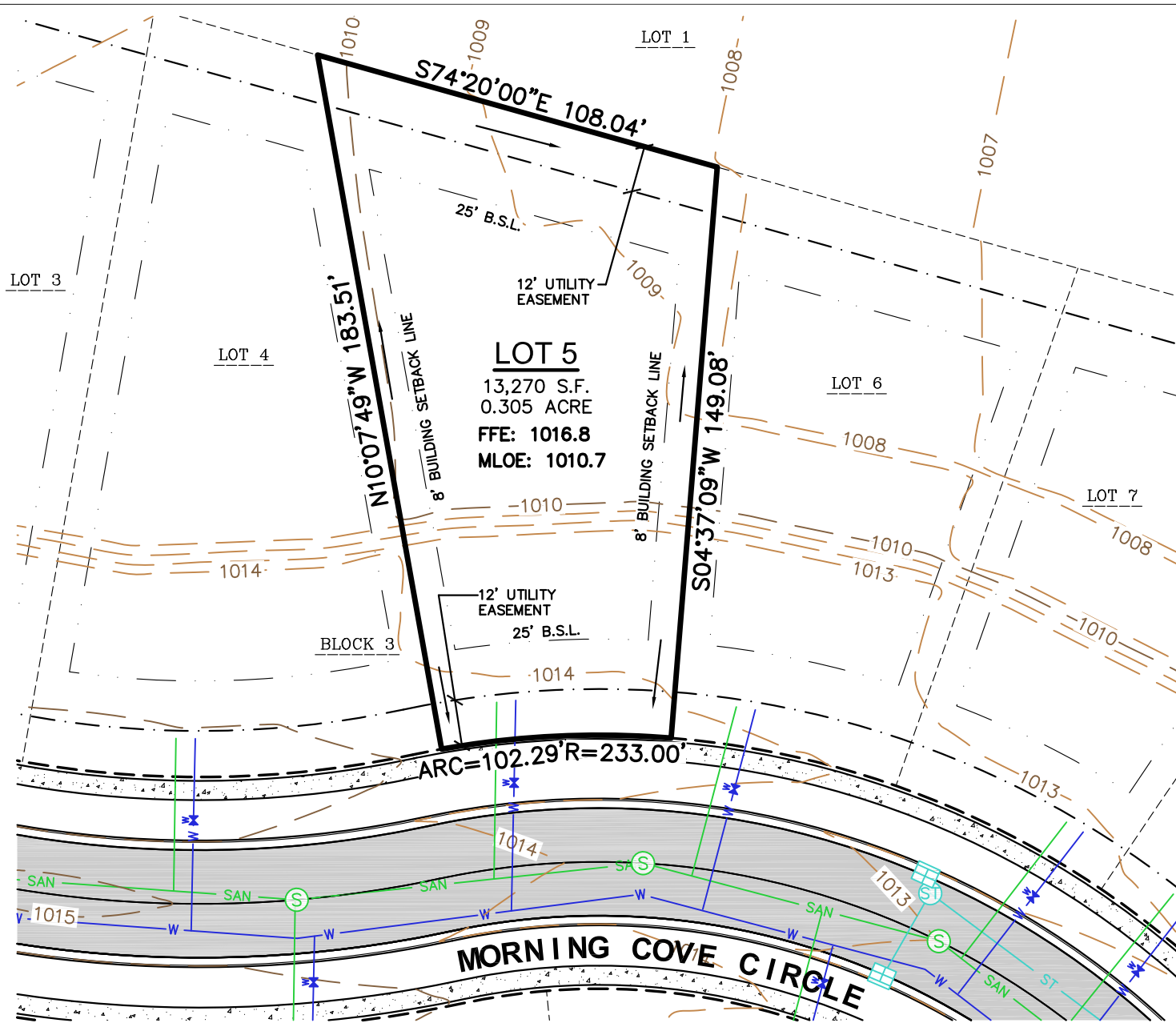
Phase 1 Lots



## Verona, Wisconsin

The City of Verona offers its residents hometown charm with the benefits of a growing community located close to Madison. Residents of Verona enjoy excellent schools and recreational amenities including both the Military Ridge State Bike Trail and the National Ice Age Trail. Verona is also home to Dane county's largest private sector employer, Epic Health Systems.

File: I:\2017\177777\DWG\177777 Lot Maps(Blocks 3 & 4).dwg Layout: B3 L5 User: jk Plotted: Aug 10, 2023 - 3:30pm

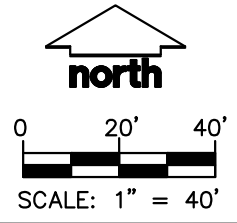


**LEGEND**

	SANITARY MANHOLE		RIGHT-OF-WAY LINE		ST STORM SEWER
	HYDRANT		PLATTED LOT LINE		W WATER LINE
	WATER VALVE		SETBACK LINE		1010 INDEX CONTOUR
	STORM MANHOLE		EASEMENT LINE		1011 INTERMEDIATE CONTOUR
	CURB INLET		CONCRETE CURB & GUTTER		BITUMINOUS PAVEMENT
	LOT BOUNDARY		SANITARY SEWER		CONCRETE PAVEMENT
	CENTERLINE		DRAINAGE ARROW PER PLAT	<b>FFE</b>	FINISHED FLOOR ELEVATION
			B.S.L. BUILDING SETBACK LINE	<b>MLOE</b>	MINIMUM LOWEST OPENING ELEVATION

**NOTES**

1. IMPROVEMENTS SHOWN ARE PROPOSED.
2. BEARINGS FOR THIS SURVEY AND MAP ARE REFERENCED TO THE WISCONSIN COUNTY COORDINATE SYSTEM, DANE COUNTY. THE EAST LINE OF THE NORTHWEST QUARTER OF SECTION 10, TOWNSHIP 06 NORTH, RANGE 08 EAST, RECORDED AS N00°36'54"E.
3. ELEVATIONS ARE BASED ON THE NORTH AMERICAN VERTICAL DATUM OF 1988 (NAVD88).
4. CONTOURS SHOWN AS PROPOSED AT ONE FOOT INTERVALS.
5. MAILBOX FOR THIS LOT IS LOCATED ON OUTLOT 3, BLOCK 3.



 <b>JSD</b> MADISON REGIONAL OFFICE 161 HORIZON DRIVE, SUITE 101 VERONA, WISCONSIN 53593 P. 608-848-5060	PROJECT:	SHEET TITLE:	PROJECT NUMBER:	SHEET NUMBER:
	<b>WHISPERING COVES</b>	<b>LOT 5, BLOCK 3</b>	17-7777	1
	VERONA, WI		DRAWN BY:	
			JK	
			DATE:	
			JULY 27, 2023	