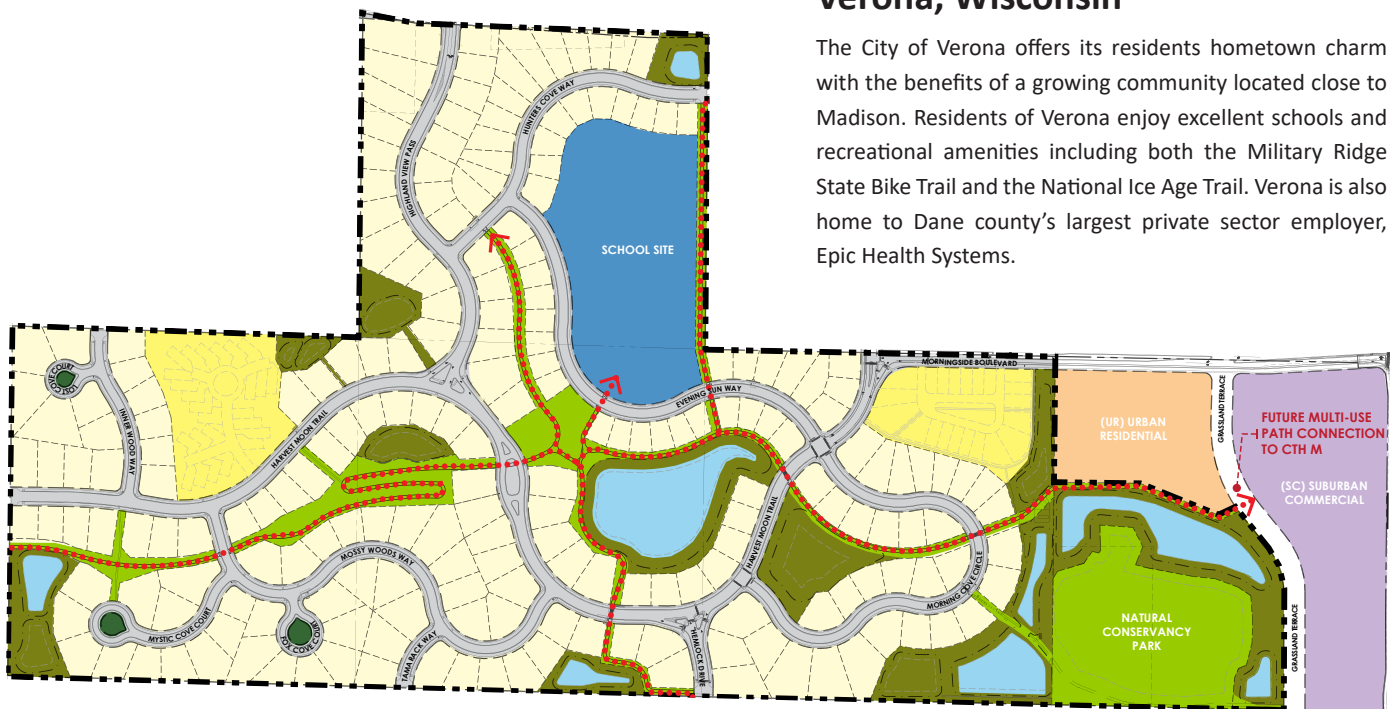


Lot Number:	Block 3, Lot 9
Lot Price:	\$198,900
Lot Size:	12,940 Square Feet
Exposure:	Walkout
Address:	TBD
Municipality:	City of Verona
School District:	Verona Area School District



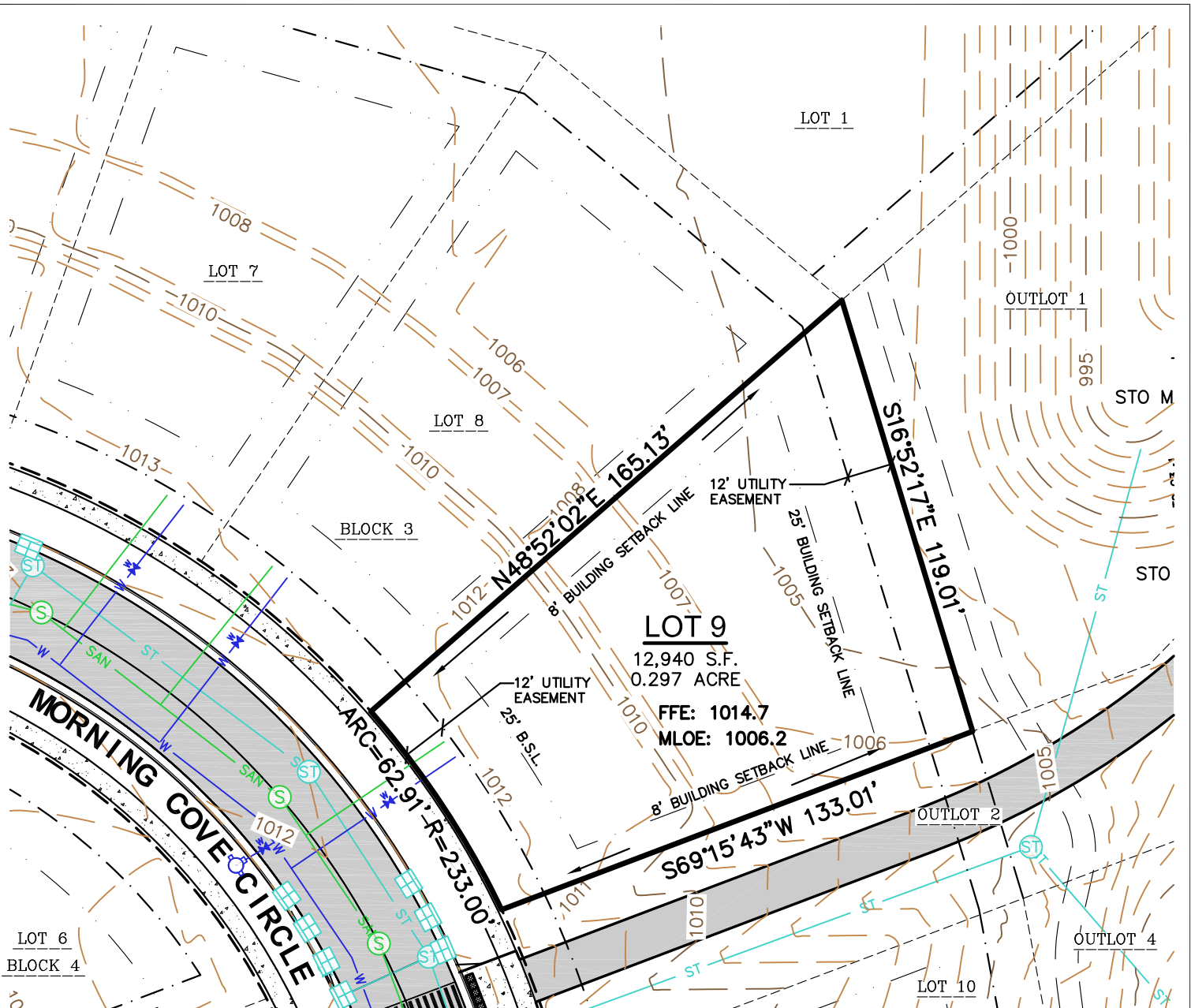
Phase 1 Lots



Verona, Wisconsin

The City of Verona offers its residents hometown charm with the benefits of a growing community located close to Madison. Residents of Verona enjoy excellent schools and recreational amenities including both the Military Ridge State Bike Trail and the National Ice Age Trail. Verona is also home to Dane county's largest private sector employer, Epic Health Systems.

File: I:\2017\177777\DWG\177777 Lot Maps(Blocks 3 & 4).dwg Layout: B3 L9 User: jk Plotted: Sep 13, 2023 - 8:42am

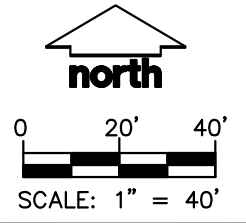


LEGEND

SANITARY MANHOLE	RIGHT-OF-WAY LINE	STORM SEWER
HYDRANT	PLATTED LOT LINE	WATER LINE
WATER VALVE	SETBACK LINE	INDEX CONTOUR
STORM MANHOLE	EASEMENT LINE	INTERMEDIATE CONTOUR
CURB INLET	CONCRETE CURB & GUTTER	BITUMINOUS PAVEMENT
LOT BOUNDARY	SANITARY SEWER	CONCRETE PAVEMENT
CENTERLINE	DRAINAGE ARROW PER PLAT	FFE FINISHED FLOOR ELEVATION
	B.S.L. BUILDING SETBACK LINE	MLOE MINIMUM LOWEST OPENING ELEVATION

NOTES

1. IMPROVEMENTS SHOWN ARE PROPOSED.
2. BEARINGS FOR THIS SURVEY AND MAP ARE REFERENCED TO THE WISCONSIN COUNTY COORDINATE SYSTEM, DANE COUNTY. THE EAST LINE OF THE NORTHWEST QUARTER OF SECTION 10, TOWNSHIP 06 NORTH, RANGE 08 EAST, RECORDED AS N00°36'54"E.
3. ELEVATIONS ARE BASED ON THE NORTH AMERICAN VERTICAL DATUM OF 1988 (NAVD88).
4. CONTOURS SHOWN AS PROPOSED AT ONE FOOT INTERVALS.
5. MAILBOX FOR THIS LOT IS LOCATED ON OUTLOT 3, BLOCK 3.



<p>JSD MADISON REGIONAL OFFICE 161 HORIZON DRIVE, SUITE 101 VERONA, WISCONSIN 53593 P. 608-848-5060</p>	PROJECT: WHISPERING COVES	SHEET TITLE: LOT 9, BLOCK 3	PROJECT NUMBER: 17-7777	SHEET NUMBER: 1
	VERONA, WI		DRAWN BY: JK	
			DATE: SEPT. 13, 2023	