

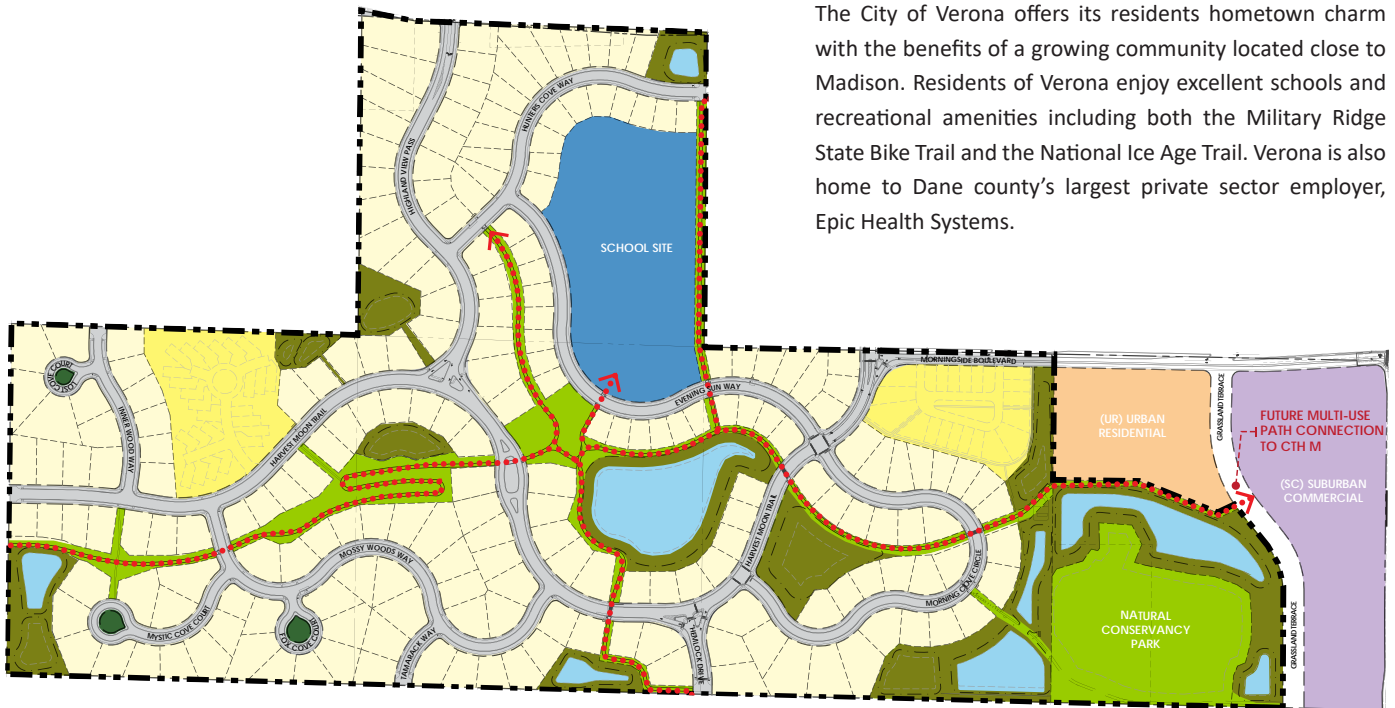
Lot Number:	Block 5, Lot 5
Lot Price:	\$228,735
Lot Size:	13,875 square feet
Exposure:	Lookout
Address:	TBD
Municipality:	City of Verona
School District:	Verona Area School District



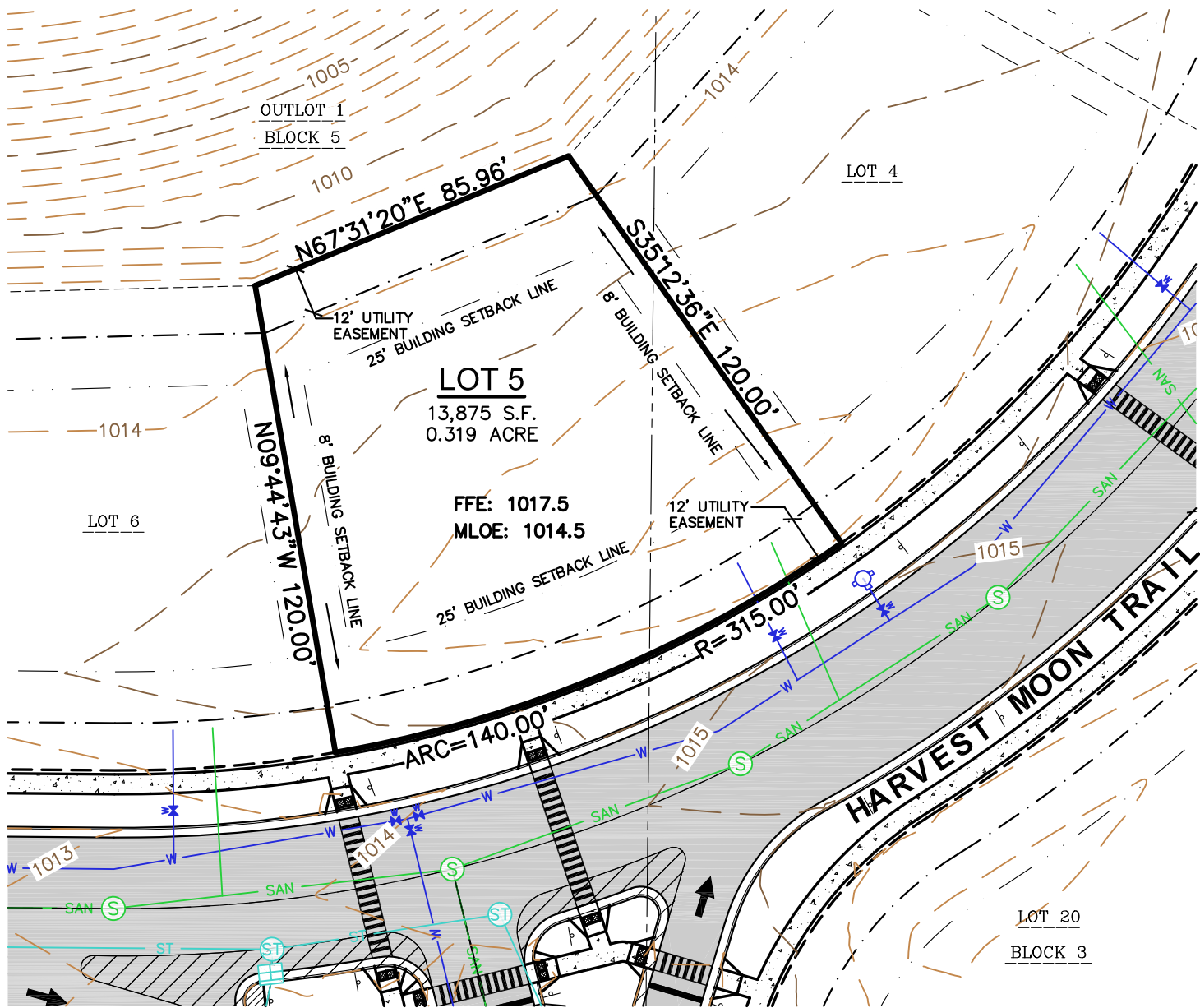
Phase 1 Lots

Verona, Wisconsin

The City of Verona offers its residents hometown charm with the benefits of a growing community located close to Madison. Residents of Verona enjoy excellent schools and recreational amenities including both the Military Ridge State Bike Trail and the National Ice Age Trail. Verona is also home to Dane county's largest private sector employer, Epic Health Systems.



File: I:\2017\177777\DWG\177777 Lot Maps(Blocks 5, 6 & 15).dwg Layout: B5 L5 User: jk Plotted: Sep 13, 2023 - 9:49am



LEGEND

	SANITARY MANHOLE		RIGHT-OF-WAY LINE		ST	STORM SEWER
	HYDRANT		PLATTED LOT LINE		W	WATER LINE
	WATER VALVE		SETBACK LINE		1010	INDEX CONTOUR
	STORM MANHOLE		EASEMENT LINE		1011	INTERMEDIATE CONTOUR
	CURB INLET		CONCRETE CURB & GUTTER			BITUMINOUS PAVEMENT
	LOT BOUNDARY		SANITARY SEWER			CONCRETE PAVEMENT
	CENTERLINE		DRAINAGE ARROW PER PLAT	FFE		FINISHED FLOOR ELEVATION
				MLOE		MINIMUM LOWEST OPENING ELEVATION

NOTES

1. IMPROVEMENTS SHOWN ARE PROPOSED.
2. BEARINGS FOR THIS SURVEY AND MAP ARE REFERENCED TO THE WISCONSIN COUNTY COORDINATE SYSTEM, DANE COUNTY. THE EAST LINE OF THE NORTHWEST QUARTER OF SECTION 10, TOWNSHIP 06 NORTH, RANGE 08 EAST, RECORDED AS N00°36'54"E.
3. ELEVATIONS ARE BASED ON THE NORTH AMERICAN VERTICAL DATUM OF 1988 (NAVD88).
4. CONTOURS SHOWN AS PROPOSED AT ONE FOOT INTERVALS.
5. MAILBOX FOR THIS LOT IS LOCATED ON OUTLOT 3, BLOCK 6.



MADISON REGIONAL OFFICE
161 HORIZON DRIVE, SUITE 101
VERONA, WISCONSIN 53593
P. 608-848-5060

PROJECT:
WHISPERING COVES

VERONA, WI

SHEET TITLE:
LOT 5, BLOCK 5

PROJECT NUMBER:
17-7777

DRAWN BY:
JK

DATE:
SEPT. 13, 2023

SHEET NUMBER:

1